

As we focus on the short period of time between Gethsemane and the crucifixion, we think primarily of Jesus – the man himself. We also meet Judas Iscariot, Peter, Simon of Cyrene, John, Mary (Jesus' mother), Pilate, the soldiers, the religious leaders, Joseph of Arimathea and some of the women of Jerusalem – many of whom experienced a range of situations and faced challenging dilemmas and choices.

Does any of this resonate with us today – personally and/or communally?

- | | |
|----------------------------------------------------------------------------------------------------------------------------------------------------------------------------------------------------------------------------------------------------------------|------------------------------------------------------------------------------------------------------------------------------------------------------------------------------------------------------------------------|
| <ul style="list-style-type: none">● Betrayal
<i>rejection (particularly by a friend)</i>● Shame● Dilemma● Hope● Disappointment● Tenderness and caring | <ul style="list-style-type: none">● Grief● Generosity● Regret
<i>especially when the clock can't be turned back or amends made</i>● Weariness |
|----------------------------------------------------------------------------------------------------------------------------------------------------------------------------------------------------------------------------------------------------------------|------------------------------------------------------------------------------------------------------------------------------------------------------------------------------------------------------------------------|

Perhaps you might like to write your own thoughts:



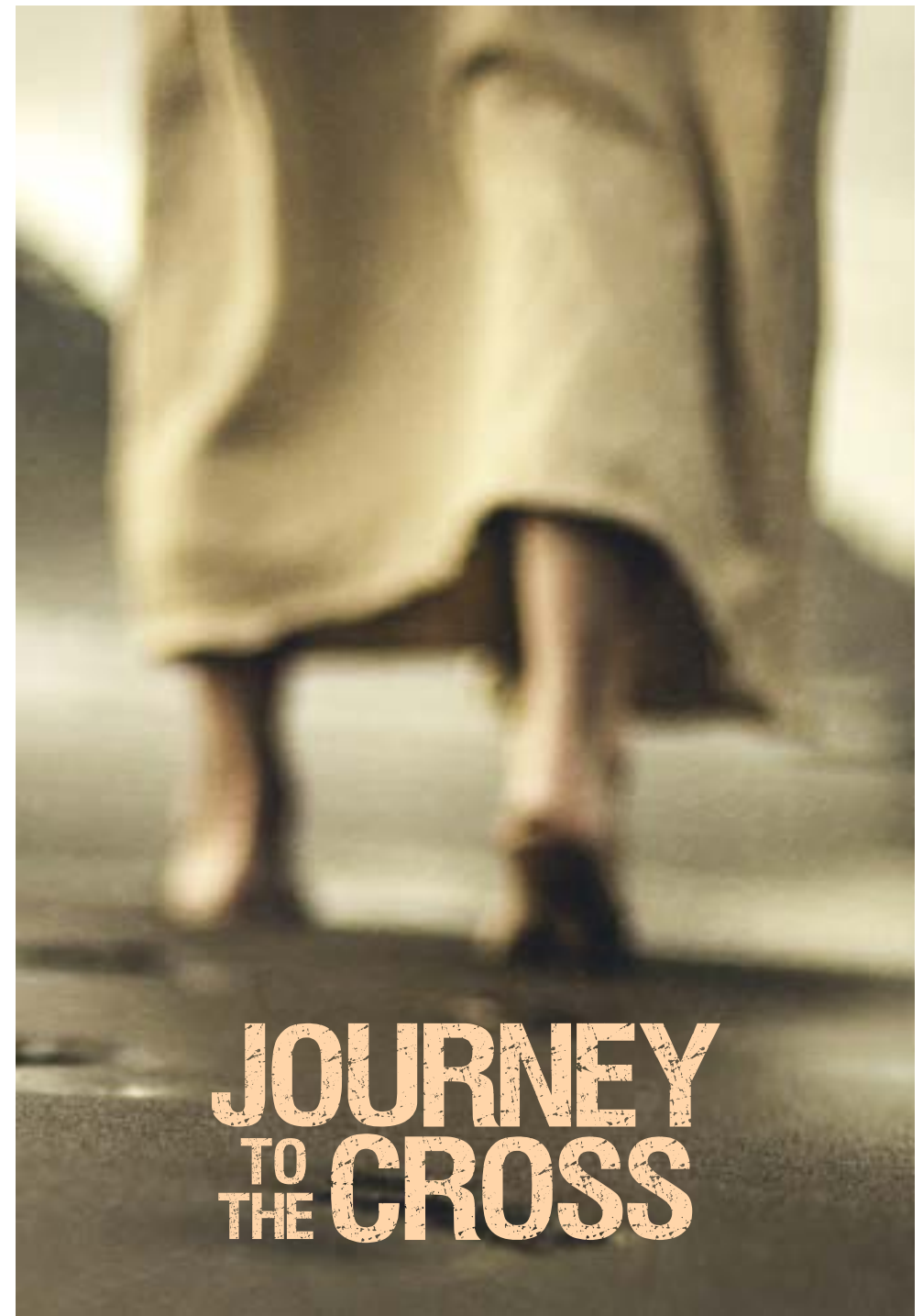
ST MARY'S CHURCH
REDBOURN

Hemel Hempstead Road
Redbourn AL3 7DU

01582 791669

www.stmarysredbourn.org

Jesus said: 'Come to me, all you who are weary and are carrying heavy burdens, and I will give you rest. Take my yoke upon you and learn from me for I am gentle and humble in heart and you will find rest for your souls. For my yoke is easy and my burden is light. *Matthew 11: 28 – end*



JOURNEY TO THE CROSS

During Lent, there are 12 pictures that you are invited to look at, in the north and south aisles of the church.

You may find that a particular picture 'speaks' to you, prompting a thought, a question, an emotion, a prayer. If so, you could sit and stay with the image for a time.

Lesley Poulton, who drew the pictures, writes: "This is not meant to be an exhibition, but simply one person's 'take' on 12 stages of Jesus' journey towards his crucifixion, and is offered with love."

These stages on the journey to the cross are traditionally known as the Stations of the Cross.

1



Gethsemane. The sorrow and agony of choice.

Luke 22:41-46

2



One disciple, Judas, said: 'The man I kiss is the one you want. Arrest him.'

Luke 22:47-53

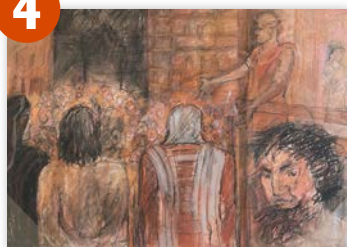
3



Another disciple, Peter, said: 'I do not know the man ...'

Luke 22:54-62

4



Pilate, the Governor, asked: 'What do you want me to do with him?' The crowd answered: 'Crucify him.'

Luke 23:13-25

5



Jesus is violently stripped and whipped.

Matt. 27:27-31

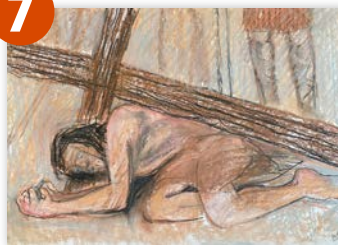
6



Women wept at seeing Jesus vulnerable and bleeding.

Luke 23:27-31

7



Bruised and broken, Jesus could hardly move.

8



Simon of Cyrene, a foreigner, is compelled to carry the cross.

Luke 23:26

9



Jesus is nailed to the cross.

Luke 23:33-47

10



Jesus wanted John and his mother, Mary, to look after each other.

John 19:25-27

11



Jesus is taken down from the cross.

Luke 23:52-53

12



He is laid in the quiet darkness of the tomb.

Luke 23:53-56